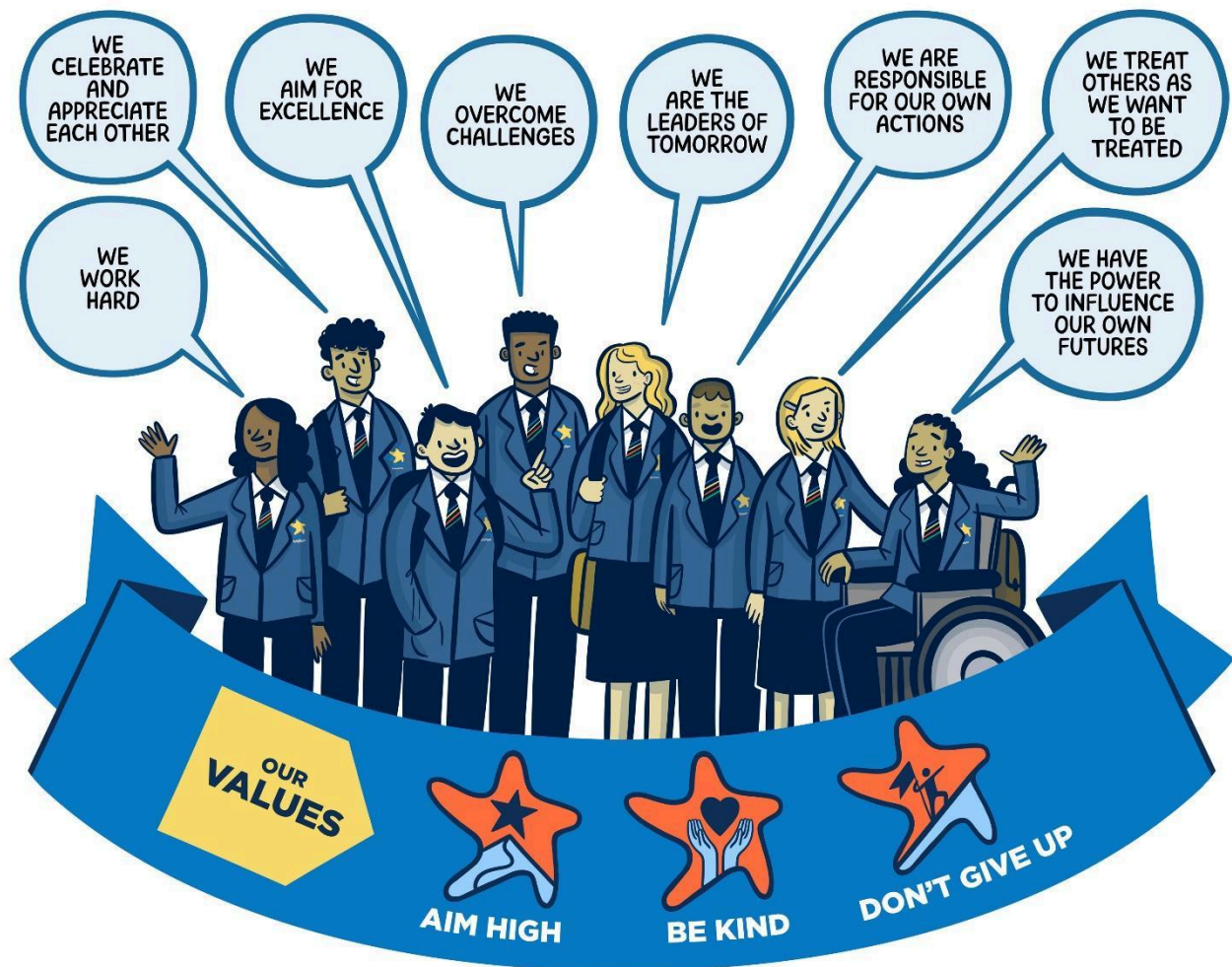


# Marine Academy

## Sixth Form Application 2025-26



We're delighted that you're choosing Marine Academy Sixth Form as your next step. Here, we're dedicated to our core values: *Aim High*, *Be Kind*, and *Never Give Up*. We encourage applications from students who are ready to embrace these principles and are committed to thriving within our **supportive and ambitious community**. Once you've applied, we'll reach out to arrange a meeting and discuss how we can support your future goals. Scan the QR code if you would like to submit an online application.



Alex White

*Assistant Vice Principal – Sixth Form and Student Development*

Choose a **minimum** of three subjects (you CAN pick four), these choices will be discussed at interview. You should pick your subjects based on enjoyment and predicted grades. Consider which subjects work well together and will enable you to access your dream University course or career.

If you are picking a subject not available at GCSE the nearest subject will be used as your entry requirement e.g. Psychology – Science GCSE grade.

**EPQ can be taken in addition to 3 A-Level/Vocational courses but does not count as one of your main subjects**

| Name  |      | Tutor Group (or previous school)  |      |
|---|------|---|------|
| Subject and Grade   | Tick | Subject and Grade   | Tick |
| A Level Art<br><b>(Art GCSE 5 or Above)</b>                           |      | Geography<br><b>(Geography GCSE 5 or above)</b>   |      |
| A Level History<br><b>(History GCSE at 5 or above)</b>                |      | A Level English Literature <b>(English GCSE at 6 or above)</b>  |      |
| A Level Psychology<br><b>(English/Science/Maths GCSE at 5+)</b>       |      | A Level Sociology<br><b>(English GCSE at 5 or above)</b>  |      |
| A Level Geography <b>(Geography GCSE at 5 or above)</b>               |      | A Level Media Studies<br><b>(Media/ English GCSE at 5 or above)</b>   |      |
| A Level Mathematics<br><b>(Maths GCSE at 7 or above)</b>              |      | BTEC Sport Single<br><b>(GCSE Merit or other experience)</b>  |      |
| A Level Further Mathematics <b>(Self Taught with 3 contact hours)</b> |      | BTEC Sport (Double Award)<br><b>(GCSE Merit or other experience)</b>  |      |
| Business Cambridge Technical<br><b>(English Grade 4)</b>              |      | BTEC Performing Arts (Double or Single Award) <b>(GCSE Merit)</b>   |      |
| A Level Photography<br><b>(GCSE 5 or above + photoshop talent)</b>    |      | BTEC Health and Social Care<br><b>(English at 4 or above)</b>   |      |
| A Level Biology<br><b>(Science GCSE at 6 or above)</b>                |      | BTEC Dance<br><b>(GCSE Merit or previous experience)</b>  |      |
| A Level Physics<br><b>(Science GCSE at 7 or above &amp; maths 6)</b>  |      | BTEC Music performance <b>(GCSE Merit or other musical experience)</b>  |      |
| Criminology<br><b>(English at 4 or above)</b>                         |      |   |      |
| A Level Chemistry<br><b>(Science GCSE at 7 or above)</b>              |      | Depending on Numbers would you be interested in MAP running English language.<br>Only answer if 100% committed to attending |      |
| <b>The Fourth Option</b>  |      |   |      |

|  |  |
|--|--|
| Extended Project Qualification (1 lesson/ fortnight) |  |
|--|--|

Declaration: I understand that advertised courses will only run if there is sufficient demand. Furthermore, that subjects will be placed into blocks and that my choices may clash.

Signature ..... Date.....

MAP Pathways which will help you decide what subjects work well together to ensure that you set yourself up for great things. In compiling these choices we have taken a look at what Universities and professions prefer as subject combinations for some common 'dream graduate jobs'.

| Careers  | A-Level Required                 | MAP Pathway  |  |
|--|----------------------------------|--|--|
| Vetinary Sciences and Medicine (獣医学)               | Biology                          | Biology<br>Chemistry<br>English Literature                       | To succeed you will need Biology and Chemistry. Adding English Literature or History would demonstrate you are a well- rounded student.                                      |
| Live Performance/<br>Theatrical Technician (演劇技術者) | Music/ Dance/ Drama              | Music, Drama or Dance<br>Add a subject based on your specialism. | Careers in performance can range from management (take business with your subject), writing (take English or Media) to performing and technician (take ICT)                  |
| Computer Games Designer (ゲームデザイナー)                 | ICT                              | ICT<br>Art or Photography<br>Maths                               | ICT is a must but you also need to demonstrate your aptitude for Art. Photography is a digital course and would also show a range of skills.                                 |
| Policing (警察)                                      | Criminology                      | Sociology<br>Criminology<br>Psychology or English Literature     | Criminology shows an understanding of society, crime and its workings which would help you secure a place on a policing course.  |
| Law (法学)   | English Literature               | English Literature<br>History<br>Sociology                       | English Literature and History are the most common pathways into Law at University as they demonstrate your extended writing and reasoning.                                  |
| Medicine/ Doctor (医学)                              | Chemistry and Biology            | Chemistry<br>Biology<br>Maths/ Physics                           | Chemistry and Biology are must. Rounding it off with Maths or a 3 <sup>rd</sup> science would show your wider ability.   |
| Psychologist (心理学者)                                | Psychology or English Literature | Psychology<br>English Literature<br>Sociology                    | You will need psychology but English and Sociology will help broaden your understanding. Psychology also helps improve your English writing.                                 |
| Engineer (エンジニア)                                   | Mathematics                      | Mathematics<br>Physics<br>ICT                                    | A highly paid profession which is in great demand. You'll need Maths to A-Level standard to access courses at University. Physics and IT ability will also be highly valued. |
| Social Media Manager (ソーシャルメディアマネージャー)             | Media Studies                    | Media Studies<br>English Literature<br>Psychology                | The most popular graduate dream job. English and Media are essential. Psychology will show you know what makes people tick.  |
| Accountancy and Professional Services (会計士)        | Mathematics                      | Mathematics<br>Business Studies<br>Psychology                    | Tough to get into but well paid. Mathematical skill is essential and business acumen will be useful. Add psychology to show you understand people.                           |
| Computer Science (コンピュータサイエンス)                     | ICT                              | ICT<br>Mathematics<br>Media Studies                              | Demonstrating both mathematic ability for coding and ICT skills will be key here. Media Studies might help broaden your understanding of user end design.                    |
| Environmental Scientist (環境科学者)                    | Geography                        | Geography<br>Mathematics<br>Applied Science                      | As the climate warms so does this area of study as we need experts who can create innovative solutions. Geography is essential.  |
| Business Management Schemes (経営学)                  | Business Studies                 | Business Studies<br>Business Finance<br>ICT or Mathematics.      | The initial choices are obvious here but if you can add Maths then you are showing you're a business manager to be reckoned with.  |
| Marine Biologist (海洋生物学者)                          | Biology                          | Biology<br>Chemistry<br>Geography.                               | Biology and Chemistry are essential and it might help to have Geography to show a knowledge of ecosystems in action.   |

|  |                                     |   |  |   |  |
|--|-------------------------------------|---|--|---|--|
| Childcare/ Midwife/<br>Nurse. (1-11)     | Health and Social Care              | Health and Social Care<br>Applied Science<br>Sport                    |  |   | In order to excel here you will need to study health and social care. Alongside this an understanding that can be gained through applied science would be invaluable.        |
| Officer in Navy, Army or<br>Marines (11) | X3 A-Levels                         | Sport   |  |   | To enter the officer corp 3 a-levels are incredibly useful. These can be non-specific but English, History, Sociology or Sport may be useful.                                |
| Teacher (11-1111)                        | <b>Maths Teacher</b><br>Mathematics | <b>Science Teacher</b><br>X2 Sciences<br>Mathematics or<br>Psychology | <b>PE Teacher</b><br>Sport (Double)<br>Mathematics | <b>English Teacher</b><br>English Literature<br>Media<br>History. | This really depends. But it is always worth thinking hard of your back up options. PE teachers often teach Maths and Science teachers are sometimes required for psychology. |